



**SHEEHAN
NAGLE
HARTRAY
ARCHITECTS**

BOARD MEETING | 16 DECEMBER 2020

agenda

Recent Program Definition Activities

Preliminary Survey Results: Project Priorities

Design Considerations

Next Steps

program definition

Recent Activities

Survey existing LLD conditions

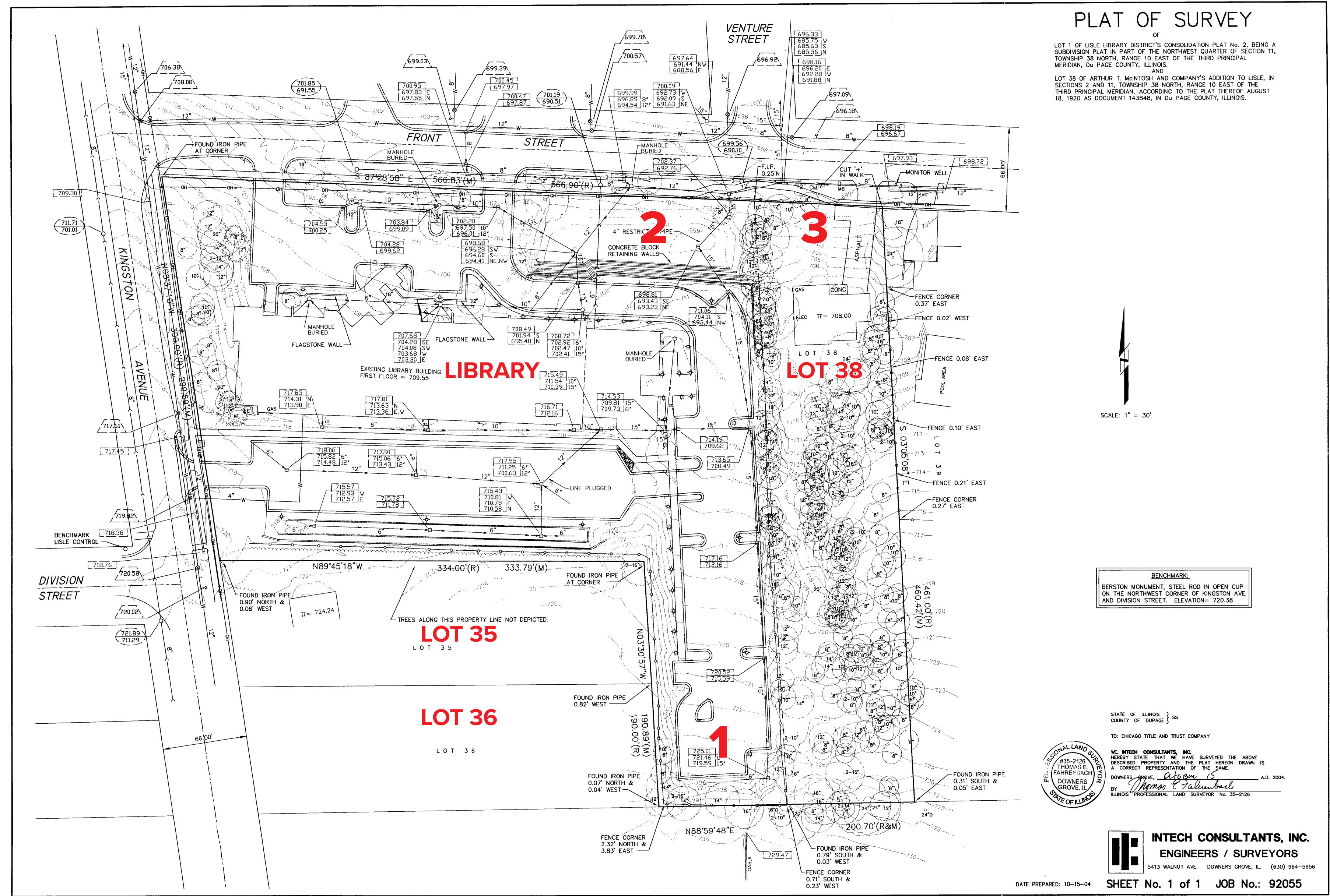
- Space usage
- Storm water management

Department Managers interviews regarding space needs

Board and all-staff surveys

storm water management

- 1 Existing off-site storm water discharge onto LLD site
- 2 Feasible to park over Front Street detention area
- 3 Potential use of Lot 38 to address site issues



preliminary Board & staff survey results

What are your top space-related priorities?

Board Members (7 of 7)	
Universal Design Principles/Making building and collections accessible	73%
Interactive children's area for ages 0-12	
Makerspace for creating and learning through arts, crafts, tooling, etc	57%
Easy access to restrooms/family restroom/nursing room	
Reconfigure staff space and storage for efficiency and social distancing	
Drive up service window	42%
Warm and welcoming atmosphere	

Staff (44 of 52)	
Small group meeting rooms for 2-10 people	45-48%
Easy access to restrooms/family restroom/nursing room	
Interactive and dedicated teen area for ages 13+	38%
Ineractive children's area for ages 0-12	
Drive up service window	
Reconfigure staff space and storage for efficiency and social distancing	32-34%
Universal Design Principles/Making building and collections accessible	
Warm and welcoming atmosphere	

preliminary Board & staff survey results

Board/staff shared top space-related priorities.

Board Members (7 of 7)
Universal Design Principles/Making building and collections accessible
Interactive children's area for ages 0-12
Makerspace for creating and learning through arts, crafts, tooling, etc
Easy access to restrooms/family restroom/nursing room
Reconfigure staff space and storage for efficiency and social distancing
Drive up service window
Warm and welcoming atmosphere

Staff (44 of 52)
Small group meeting rooms for 2-10 people
Easy access to restrooms/family restroom/nursing room
Interactive and dedicated teen area for ages 13+
Ineractive children's area for ages 0-12
Drive up service window
Reconfigure staff space and storage for efficiency and social distancing
Universal Design Principles/Making building and collections accessible
Warm and welcoming atmosphere

preliminary Board & staff survey results

What is your vision for LLD’s renovation/expansion? (top three)

Board Members (7 of 7)	
Optimize space/reorganize space	
Clear library identity from the street/welcoming identity	2 responses each
Improved Youth Services	

Staff (44 of 52)	
Optimize space/reorganize space/more space	20 responses
Warm and Welcoming Character/Place for Community Connection	15
21st Century Public Library	6

design considerations

Internal Factors

- LLD space needs
- LLD service needs
- Existing building
- Site constraints

External Factors

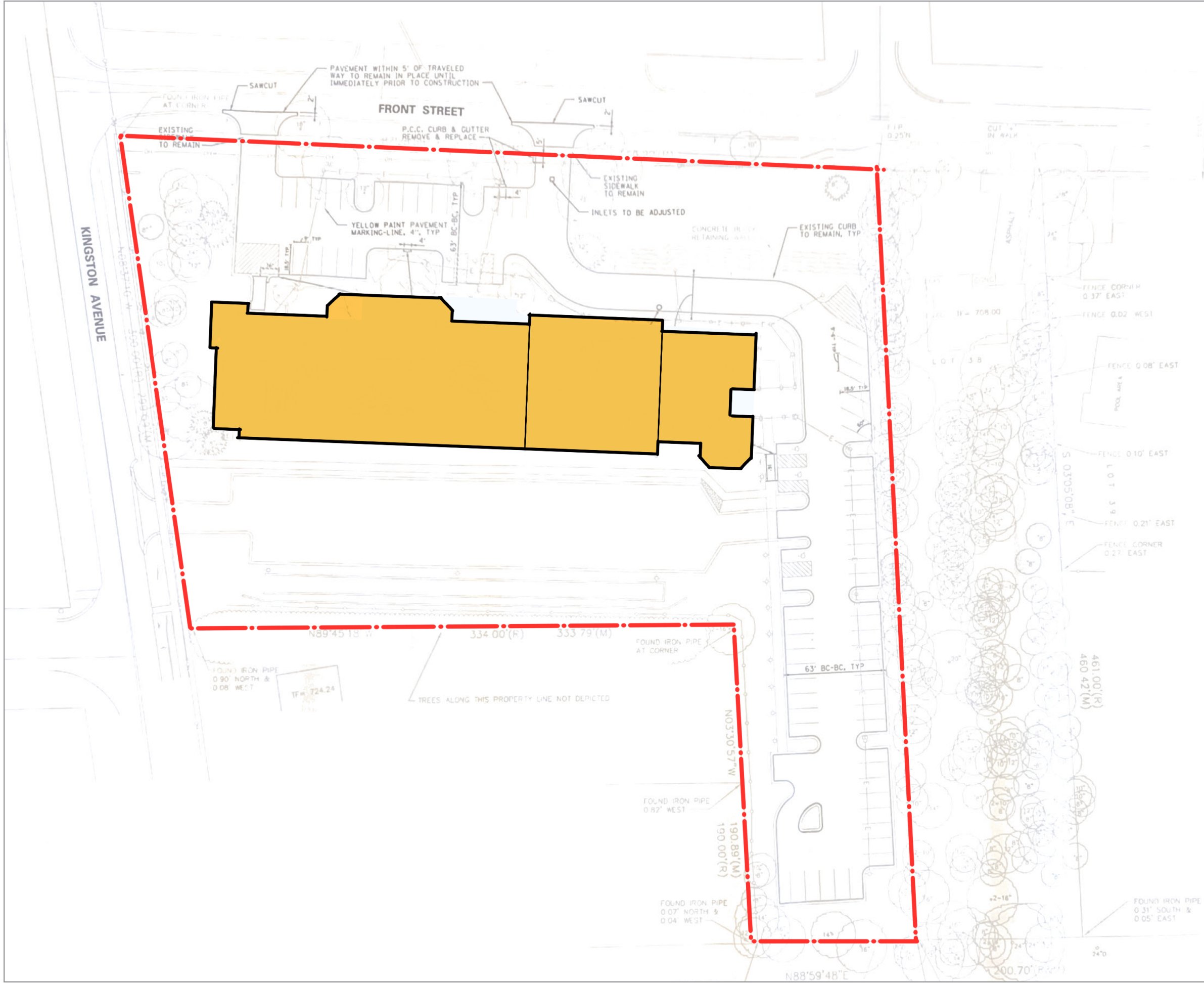
- Library service trends
- Lisle civic architecture
- LLD neighbors

COVID Factors

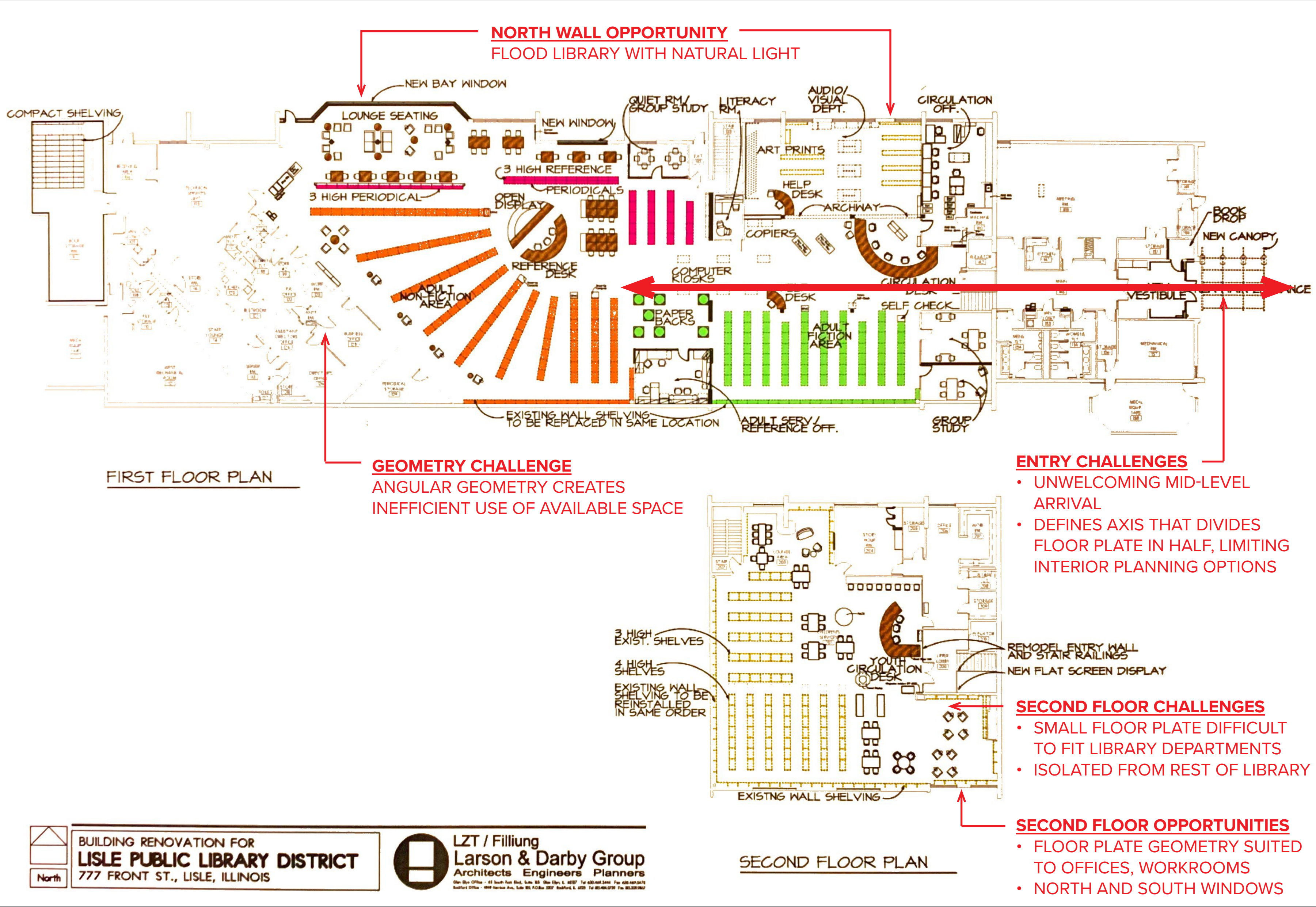
- Access to AV technology & equipment
- Access to safe meeting rooms

SNHA Factor

Design that reflects the Lisle Library community values and identity.



design considerations





Q & A

What do we need to know as we begin Concept Design?