

BEAN, BLUE LAKE 274 GREEN BUSH



BEAN, BUTTER PEA LIMA



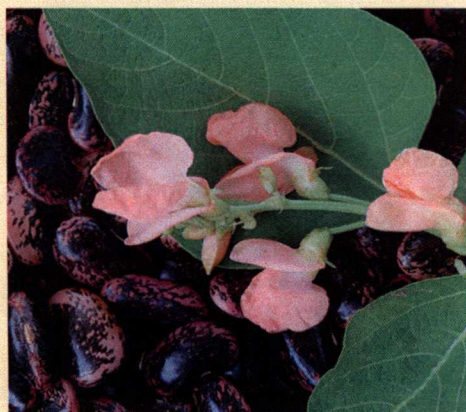
BEAN, GOLDEN WAX YELLOW  
*Phaseolus vulgaris*



BEAN, PURPLE PODDED POLE  
*Phaseolus vulgaris*



BEAN, SUNSET RUNNER  
*Phaseolus coccineus*





BEET, DETROIT DARK RED  
*Beta vulgaris*



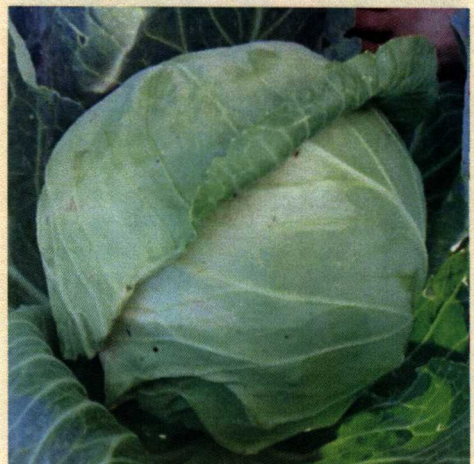
BEET, RUBY QUEEN  
*Beta vulgaris*



CABBAGE, BRUNSWICK  
*Brassica oleracea*



CABBAGE, COPENHAGEN MARKET  
*Brassica oleracea*



CABBAGE, RED ACRE  
*Brassica oleracea*





CARROT, CHANTENAY RED CORE  
*Daucus carota*



CARROT, DRAGON  
*Daucus carota*



CARROT, TENDERSWEET  
*Daucus carota*





CORN, COUNTRY GENTLEMAN

*Zea mays*



CORN, GOLDEN BANTAM

*Zea mays*



CORN, LADYFINGER POPCORN

*Zea mays*



CORN, SHAMAN'S BLUE POPCORN

*Zea mays*



CORN, WAMPUM ORNAMENTAL

*Zea mays*





EGGPLANT, BLACK BEAUTY

*Solanum melongena*



EGGPLANT, ROSA BIANCA

*Solanum melongena*





LETTUCE, BRONZE ARROWHEAD

*Lactuca sativa*



LETTUCE, ICEBERG BATAVIAN

*Lactuca sativa*



LETTUCE, RED ROMAINE

*Lactuca sativa*



OKRA, CLEMSON SPINELESS

*Abelmoschus esculentus*



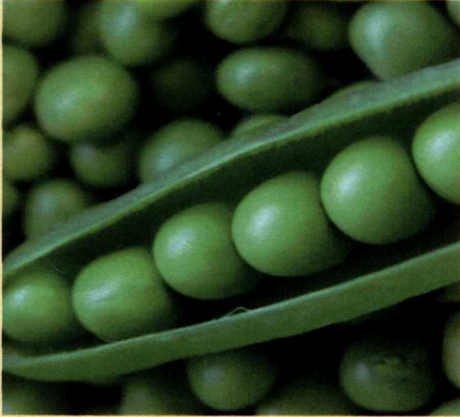
OKRA, RED BURGUNDY

*Abelmoschus esculentus*





PEA, LINCOLN SHELL  
*Pisum sativum*



PEA, SUPER SUGAR SNAP  
*Pisum sativum*



SWEET PEPPER, CALIFORNIA WONDER  
*Capsicum annuum*



PEPPER, JALAPENO TRAVELER STRAIN  
*Capsicum annuum*



RADISH, CHAMPION  
*Raphanus sativus*



SPINACH, BLOOMSDALE  
*Spinacia oleracea*





TOMATO, BRANDYWINE  
*Solanum lycopersicum*



TOMATO, CHEROKEE PURPLE  
*Lycopersicon esculentum*



TOMATO, GOLDEN JUBILEE  
*Lycopersicon esculentum*



TOMATO, ROMA HEIRLOOM  
*Lycopersicon esculentum*



TOMATO, RUTGER'S HEIRLOOM  
*Lycopersicon esculentum*



TOMATO, SMALL RED CHERRY  
*Lycopersicon esculentum*

